

Quarré-les-Tombes / Saulieu

Grande Traversée du Massif Central Gravel



Once you've taken a good look at the 112 stone sarcophagi scattered around Quarré-les-Tombes Church, the GTMC Gravel leads you along a section offering a string of spots with remarkable views. This stage provides the attractions of a hearty mountain-bike outing, plus the odd highlight along the way, such as the Forêt au Duc and the Benedictine Abbey of La Pierre qui Vire. The way is made all the prettier for being dotted with lakes of different sizes; in particular, you'll cycle beside Saint-Agnan Lake, and the lakes by the Maison du Parc. The tracks through light woods offer very good sliding thrills... on a gravel !

Along certain stretches, you leave the VTT mountain-biking route, instead riding along broad paths or stretches of road that are more pleasant for those on a gravel bike.

All told, this is a splendid stage, with many portions along tracks, but which you can avoid when they become too technically challenging by making the most of the broad paths or minor roads more suitable for gravel bikes.

The odd stretch may prove slippery when the surface is wet. The start of the section through the Forêt au Duc requires some skilful mastery during which you may have to put a foot to the ground. The rest of the stage up to Saulieu makes for easy riding, without any particular difficulties.

Départ
Quarré-les-Tombes

Arrivée
Saulieu

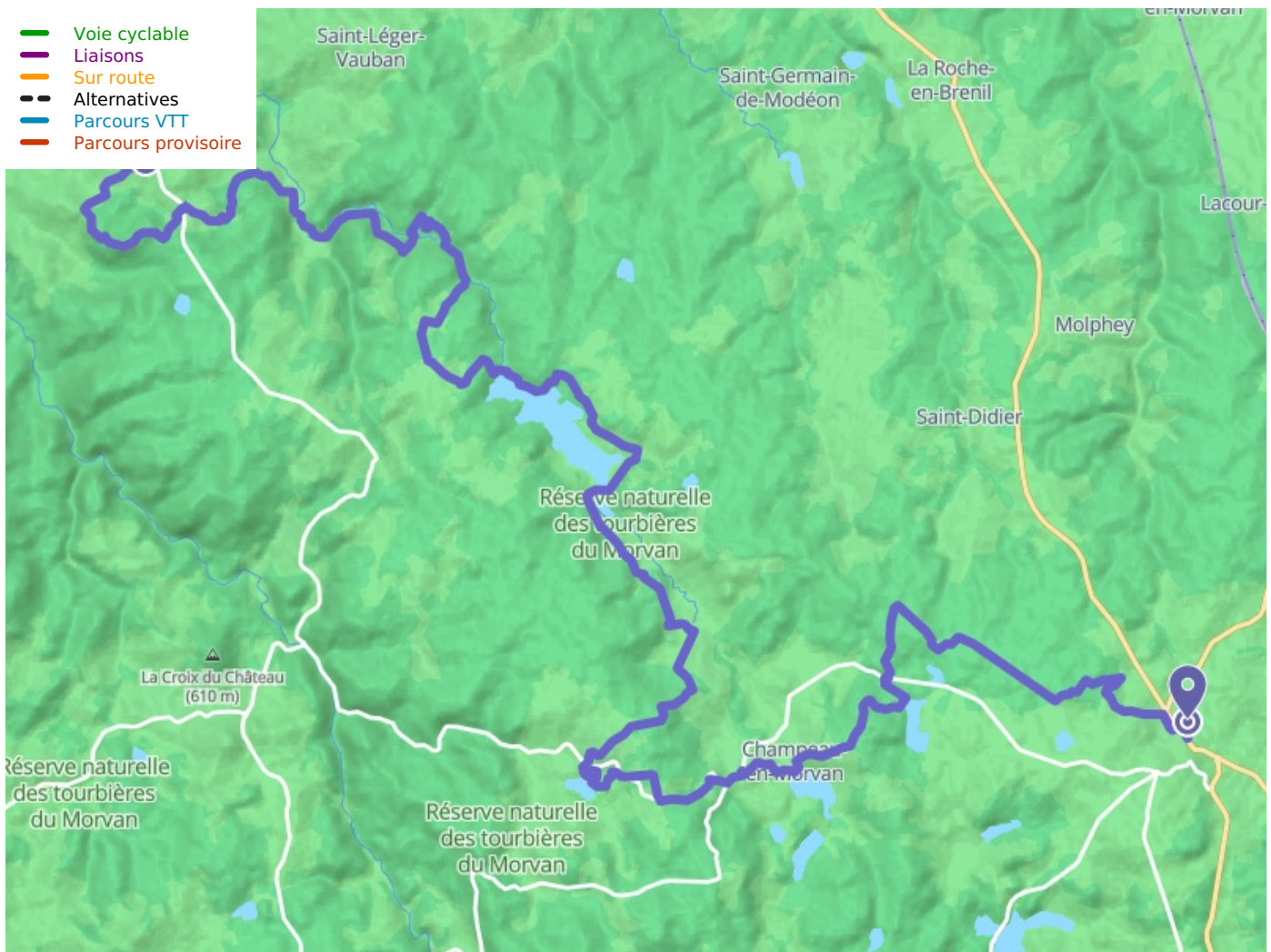
Durée
4 h 30 min

Distance
45,46 Km

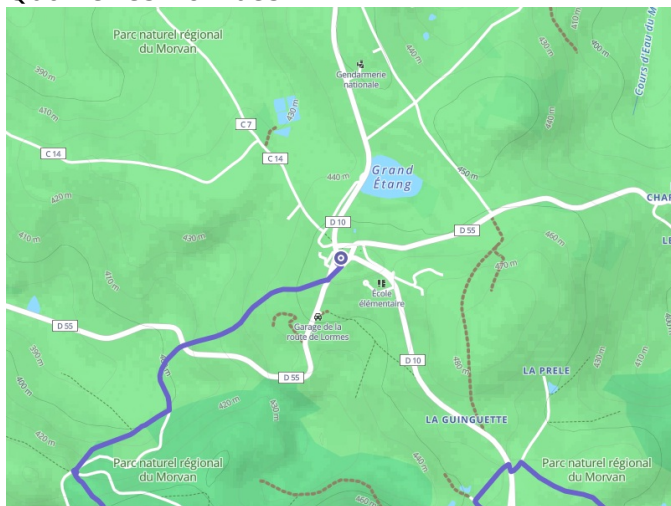
Niveau
Hard

Thématique
Forest, Lakes and
rivers, Natural parc

- Voie cyclable
- Liaisons
- Sur route
- - - Alternatives
- Parcours VTT
- Parcours provisoire



Départ
Quarré-les-Tombes



Arrivée
Saulieu

