

# Baraque des Bouviers / Bagnols-les-Bains

## Grande Traversée du Massif Central Gravel



The GTMC Gravel leads you up to the Col des Trois Soeurs pass, after which you can enjoy the lovely descent to reach the little village of Le Giraldès, typical of the French county of Lozère. Next, you ascend to the Col du Cheval Mort and the Truc de Fortunio. The descent that follows takes you down to pretty Charpal Lake, at the end of the section through the Margeride area. Now you're ready to explore your first Causse (or limestone plateau) along the GTMC, Montbel Causse. In fact, on this stage, you also set eyes on the Upper Lot Valley, finishing this portion at the little thermal resort of Bagnols-les-Bains, where a tired mountain biker might just indulge in a little pampering!

The GTMC en Gravel leads you up to the Col des Trois Sœurs pass. Here, you leave the GTMC VTT mountain-biking route to ride along a road to the Col du Cheval Mort, going via the village of Villedieu. Next, you ascend to the Signal de Randon and Le Truc de Fortunio.

The descent that follows takes you down to pretty Charpal Lake, at the end of the wider section through the wider Margeride area. Now you're ready to explore your first Causse (or limestone plateau) along the GTMC, Montbel Causse. Plus, on this stage, you'll touch on the Upper Lot Valley, finishing this ride at the little thermal resort of Bagnols-les-Bains, where a tired cyclist might just indulge in a light pampering!

**Départ**

Baraque des Bouviers

**Arrivée**

Bagnols-les-Bains

**Durée**

6 h 00 min

**Distance**

59,25 Km

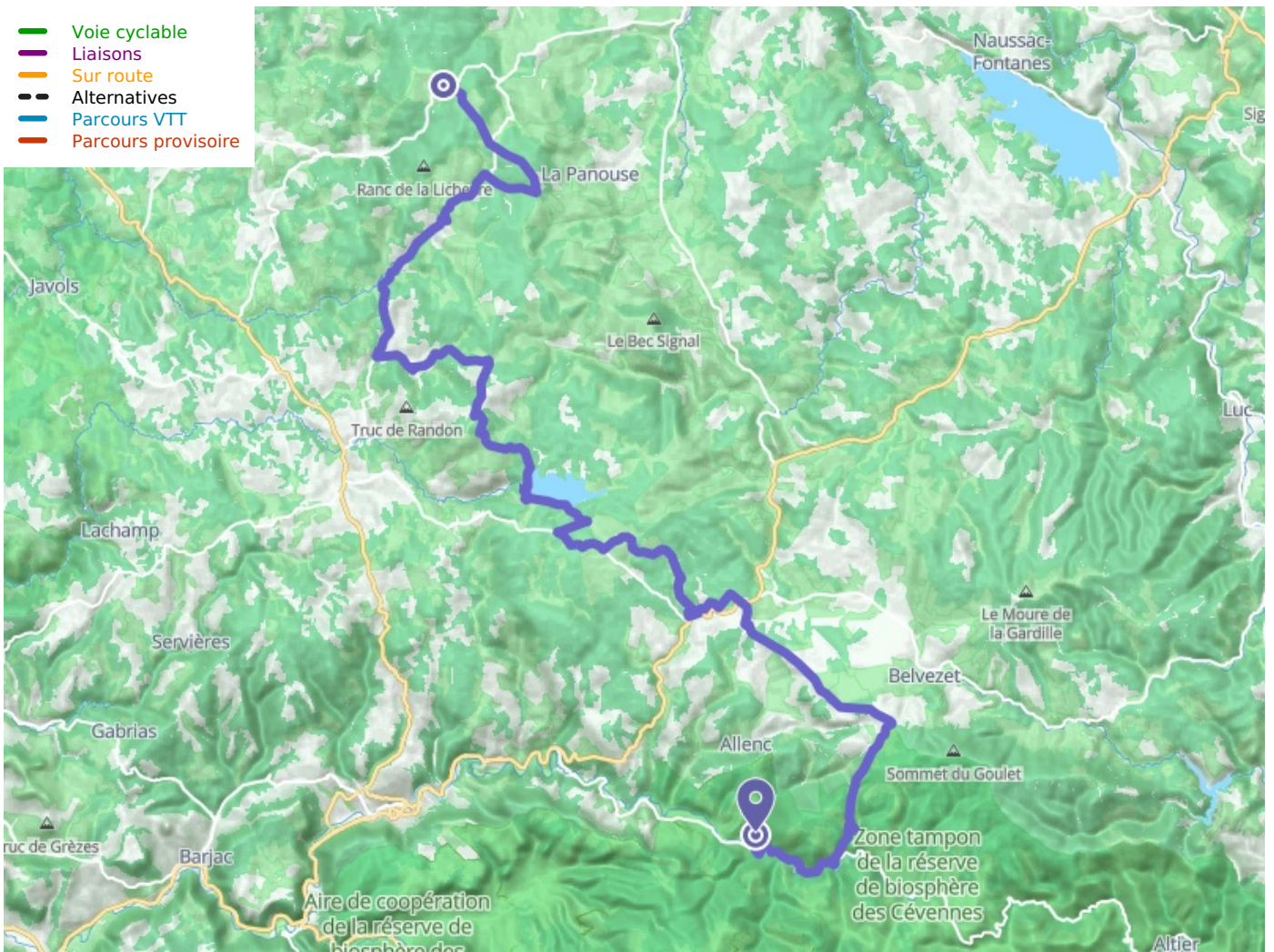
**Niveau**

Hard

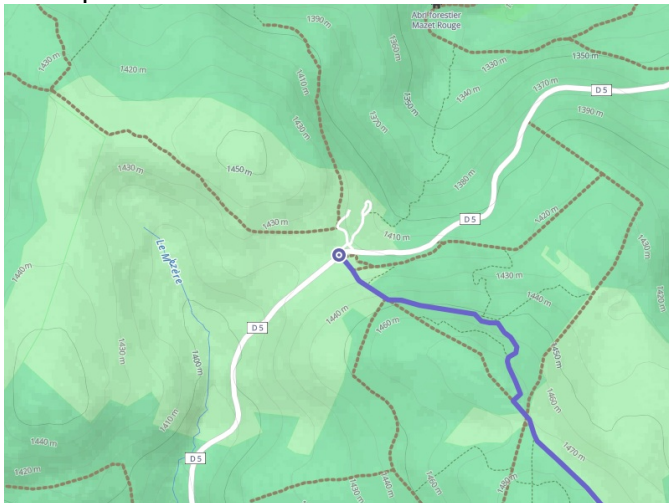
**Thématique**

Forest, Lakes and rivers, Panoramic view

- Voie cyclable
- Liaisons
- Sur route
- - - Alternatives
- Parcours VTT
- Parcours provisoire



**Départ**  
Baraque des Bouviers



**Arrivée**  
Bagnols-les-Bains

