

Bagnols-les-Bains / Le Pont-de-Montvert

Grande Traversée du Massif Central Gravel

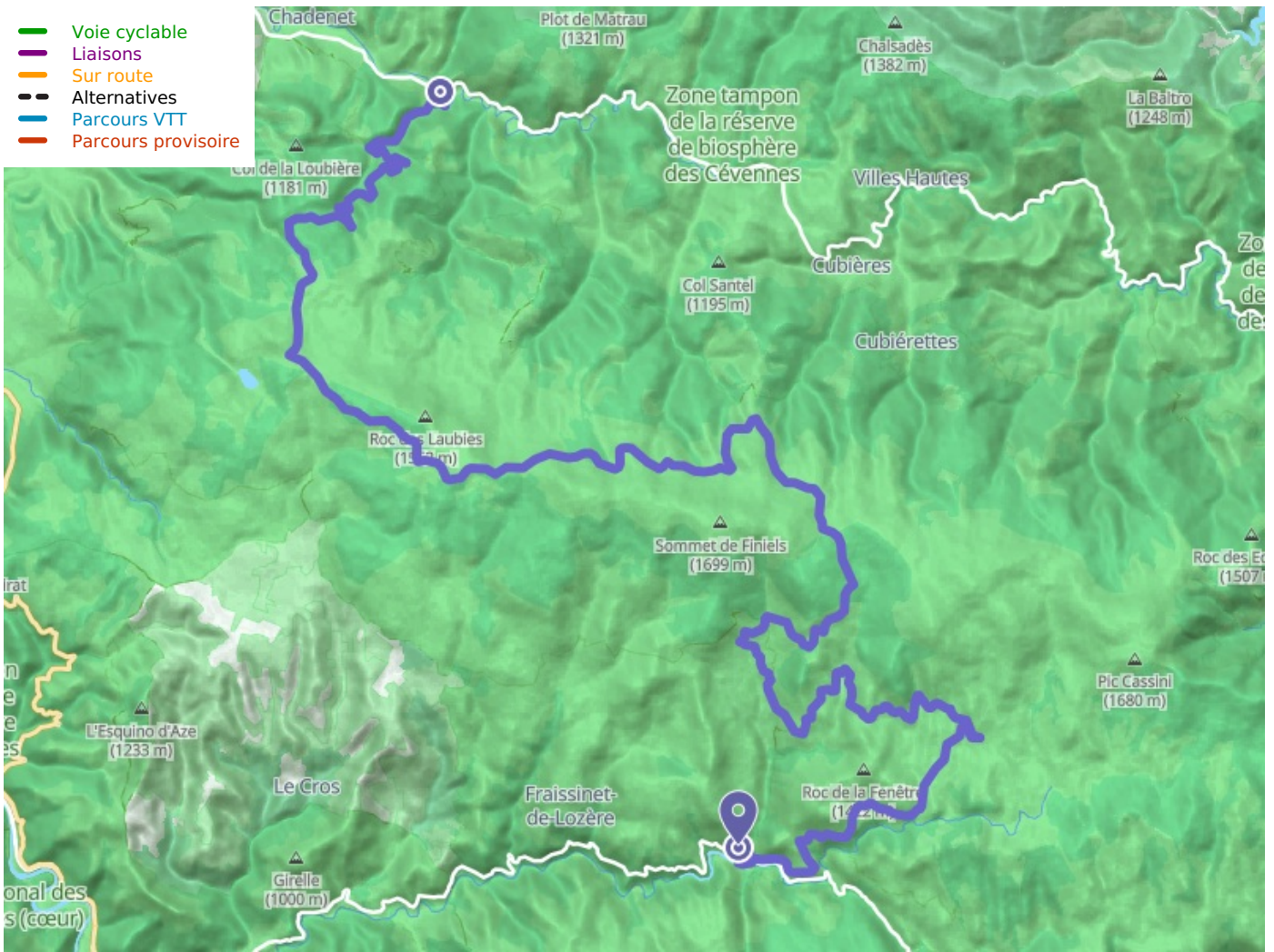


Well-maintained tracks take riders on the GTMC cycle route up to the summits of the mighty Mont Lozère, surrounded by high summer pasturelands and copses of Scots pine. Next, enjoy magnificent views from a balcony of a stretch of track, the views at times opening up to the south, at other times to the north, looking back on the Margeride area you may well just recently have cycled through.

The route doesn't take you to the very summits of the Mont Lozère, but you do see them from very close by, one after the next, before heading on to the Col de Finiels, a pass at one of the very highest points along the whole GTMC route (at an altitude of 1,541m). To descend from the Col de Finiels, you don't follow the classic VTT mountain-biking route, which is too technically demanding for a gravel bike, instead riding via the village of Finiels, before then rejoining the mountain-biking route to reach Le Pont de Montvert. Enjoy the lovely rural atmosphere along this stage, taking you through isolated hamlets, high summer pasturelands close to the source of the Tarn River, and the very first stretches of the Tarn, marked by waterfalls and water-holes. Finally, you arrive in the heart of the characterful village of Le Pont de Montvert. Note that, from the very start, this is a stage that makes you climb and climb... for 10km in one sitting, although mainly along good tracks or minor roads.

Départ Bagnols-les-Bains	Arrivée Le Pont-de-Montvert
Durée 5 h 30 min	Distance 52,18 Km
Niveau Hard	Thématique Lakes and rivers, Panoramic view, Natural parc

- Voie cyclable
- Liaisons
- Sur route
- - - Alternatives
- Parcours VTT
- Parcours provisoire



Départ
Bagnols-les-Bains



Arrivée
Le Pont-de-Montvert

